

# Global ERP - Overview



# Director Technical Services

## George Kuru

- Masters of Forestry Science degree specializing in natural resource management systems
- Thirty years international experience in the fields of forestry and agri-business logistics, labelling, chain of custody and compliance management
- Managed the implementation of forest and agricultural systems in 15 countries on 4 different continents
- Expert in traceability systems for forestry, agriculture and downstream processing
- Author of technical articles and published papers on resource monitoring, chain of custody and traceability.



# IT Operations Management

## Paul Pearson

- Expert in data analysis, project management and documentation
- Over twenty-five years international IT experience for corporate and government. Australia, Indonesia, Saudi Arabia, UK, West Africa
- IT industry sector experience: Aviation, Banking, Forestry, Insurance, Telecommunications
- Operations Leader for the Ghana Wood Tracking development program



# Global ERP Development

## John Baird

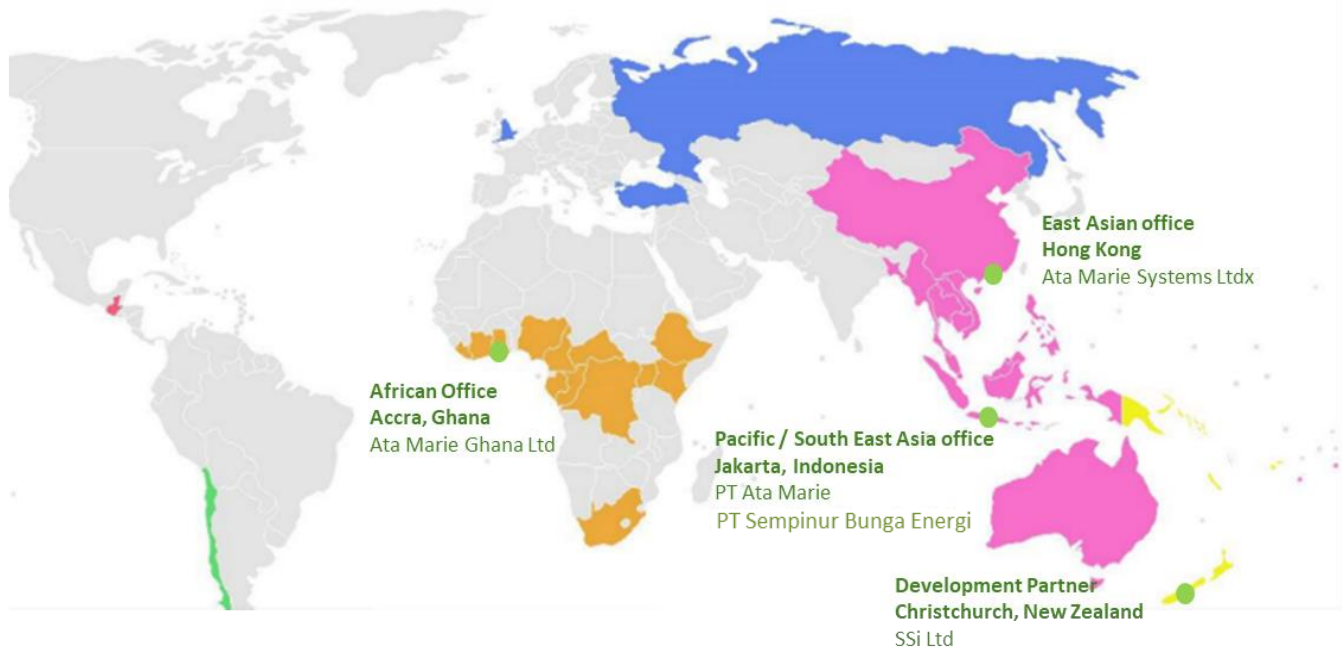
- Masters of Electrical Engineering
- Director and Development Manager at SSi Ltd
- Provides oversight and management of Global ERP implementations worldwide.
- Experienced in implementation of ERP implementation in multiple sectors including plantation forestry and agriculture, pastoral farming, mining, food processing, retail, and general logistics.



# Ata Marie Group

- An group of international companies, headquartered in Jakarta, with bases in Hong Kong, Ghana and New Zealand
- Supporting forestry and agri-business sectors throughout the Pacific, Asia, and Africa
- IT Experts in operations management, logistics and supply chain management, financial control systems
- 27 years of IT experience in forestry and agri-business sector
  - 30+ forestry management, wood processing, timber marketing
  - 20 agri-business
  - 100s food and agricultural manufacturing facilities
  - Plant and animal breeding, real estate, manufacturing, retailing

# Where are We Active?



# Ata Marie offers Global ERP

- Ata Marie has the distribution agreement for supplying Global ERP to the agri-business and forestry sectors.
- Global ERP is an IT solution that supports all aspects of business management including:
  - Institutional organization
  - Remote sensing and mapping
  - Production planning
  - Logistics
  - Stock control and management
  - Financial management
  - Relation management
  - Security
  - Auditing and quality assurance
- Global ERP can be tailored to meet the specific requirements of industries and organizations.

# Global ERP – Industry and Client Solutions

**Requirements  
assessment and system  
specification**

## **Customization**

Development of specific client  
modules through  
customization of Global ERP

## **Deployment**

On-site testing  
Training  
Data migration  
IT Infrastructure procurement  
Integration with existing  
corporate IT systems such as  
GIS and accounting

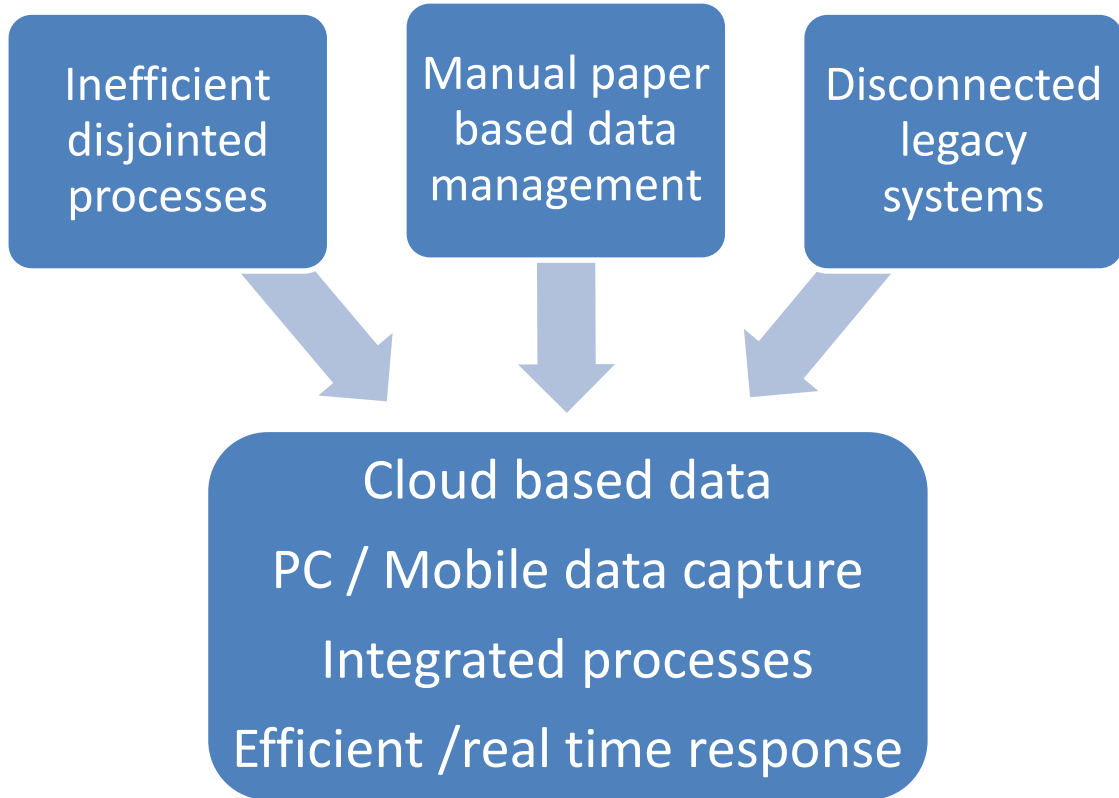


# Global ERP Systems Deployment

## 25 years international experience



# Digital Business Transformation



# Digital Business Transformation

## Design

- Definition of scope
  - Functional requirements
  - Key performance indicators (KPI)
  - Critical success factors (CSF)
- Analysis and process design
- Prepare functional and technical specifications

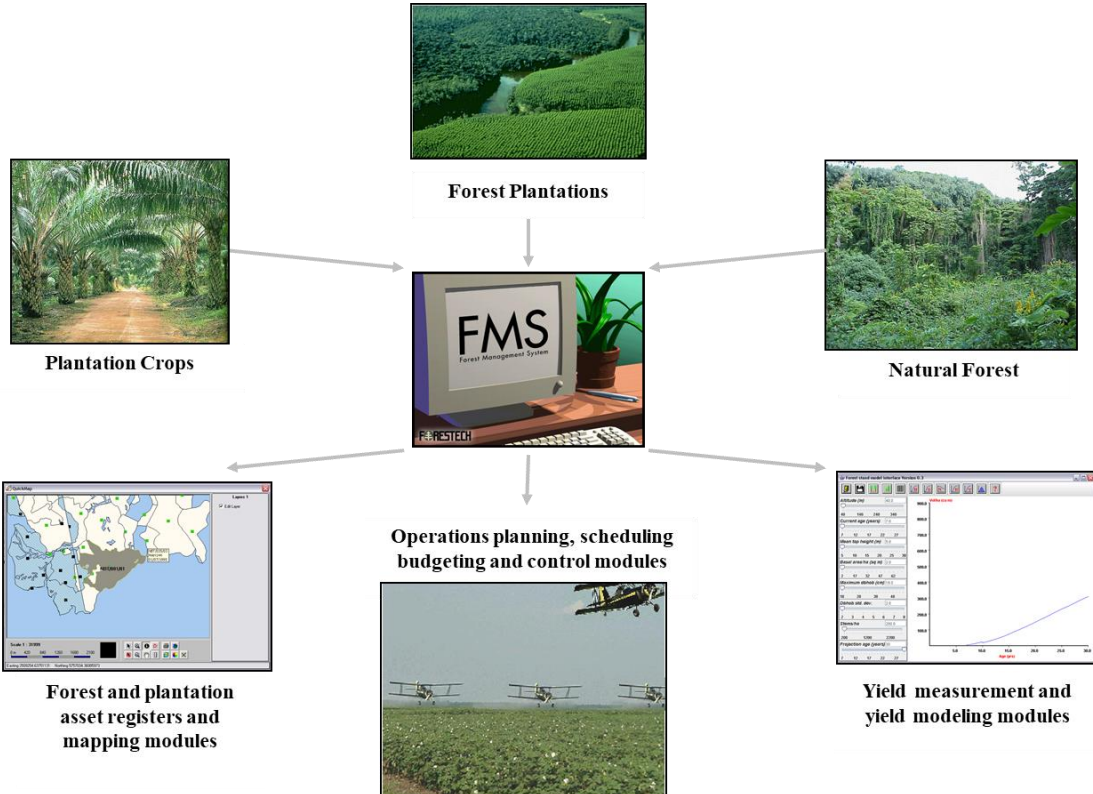
## Development

- Identify GTP components to include in client systems
- Configure the systems to meet the functional and technical specifications.
- Build the interfaces with corporate and external systems.
- Test systems according to specifications, KPI and CSF.

## Implementation

- Structure and prepare data
- Super user trainer
- Staged implementation
- Follow up review and final systems configuration
- Support and maintenance

# Plantation Management System



# Plantation Management System



## Example: New Zealand - 10,000 ha plantation estate

- Prepared GIS data for spatial database
- Plantation record system
- Plantation forest growth and yield inventory
- Permanent sample plot system
- Operations planning and budgeting systems
- Operations control – contracting, QC, payments
- Integrated financial control systems and imported all historical financial data



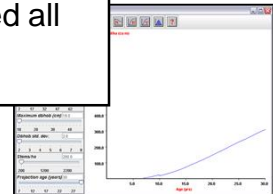
Plantation



Natural Forest

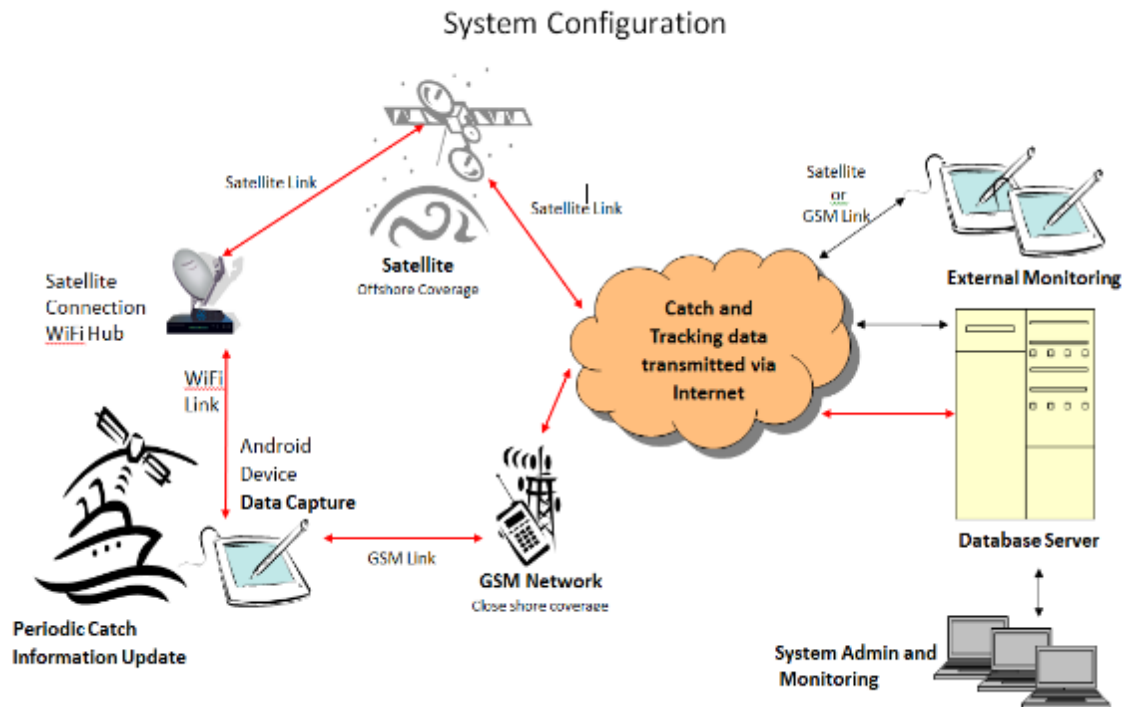


Forest and plantation asset registers and mapping modules



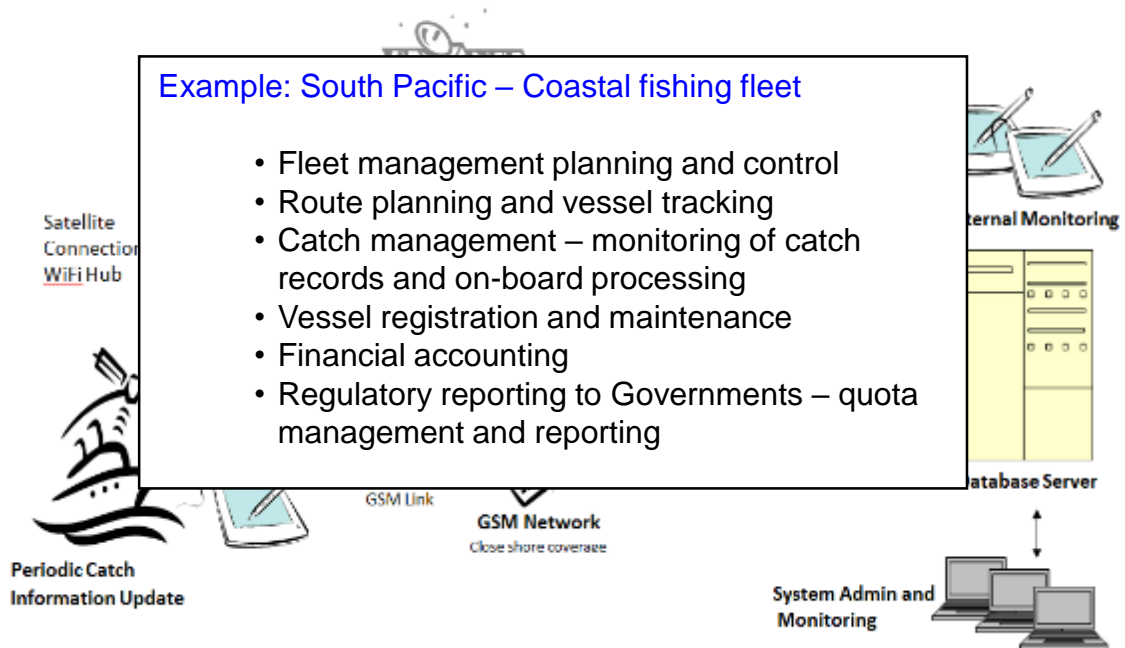
Yield measurement and yield modeling modules

# Fisheries Management System



# Fisheries Management System

## System Configuration



# Agri & Forestry Tracking System



Plantation Crop Harvesting



Transportation Management



Timber Harvesting



Stock Yards / Warehouses

Logistics planning, transportation and delivery, customer and contractor management modules



Stock scaling and grading, weighbridge, stock yard / warehouse, stock control modules



Field data collection and communications modules





# Agri & Forestry Tracking System



## Example: Ghana Wood Tracking System

- Plantation and Natural Forest registration - nationwide
- Inventory of forest growth and yield
- Log production planning
- Log tracking – forests to mills
- Wood tracking – mills to domestic and international buyers
- Customs administration and compliance
- Legality compliance and assurance



## Example: Wood Trading System

- Product trading platform for Hong Kong based trading company
- Purchase orders
- Production planning and orders management
- Management of sales and distribution to domestic and international clients

contractor management modules



warehouse, stock control modules



field data collection and communications modules



# Global ERP Uses Jade Development Environment

Global ERP is developed using the Jade Development Environment. JADE is a high-performance software platform for delivering targeted solutions to complex business problems.

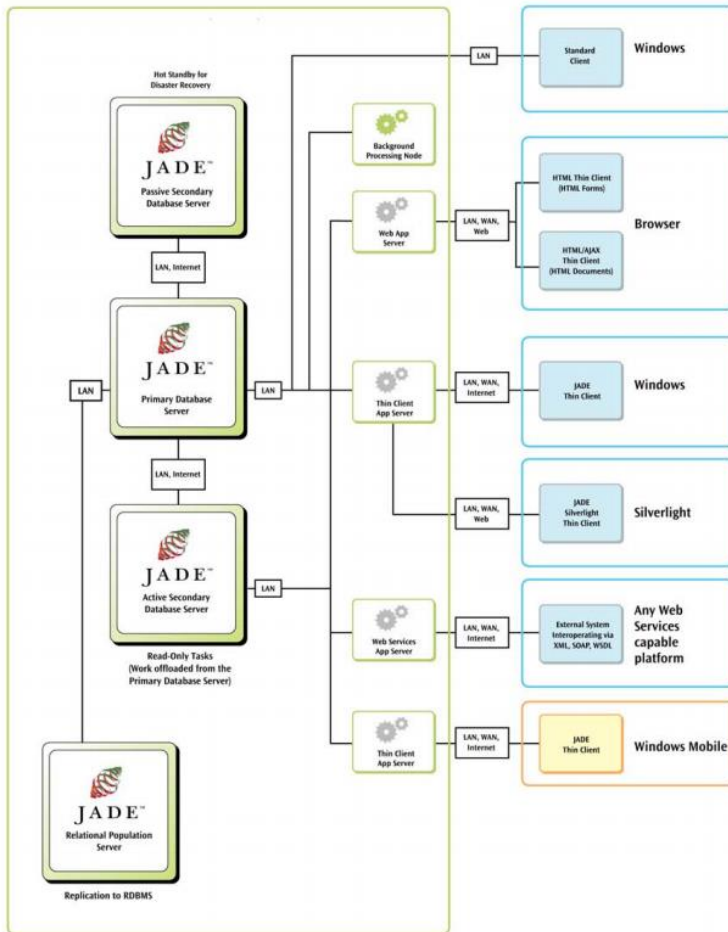
JADE excels in managing complex, highly connected data, relationships and business rules:

- Wide, interconnected networks of objects Such as the web of connections between facts in an intelligence management system.
- Deep, hierarchical object structures and decision trees Such as drilling down, traversing and validating a ship's cargo in a container management system.
- Manipulating large collections of related objects Such as tracking the exported logs of a nation in a supply chain management system, or organising transactions in a financial management system.

From logistics to financial services to case management, JADE is delivering proven results to thousands of organizations worldwide.



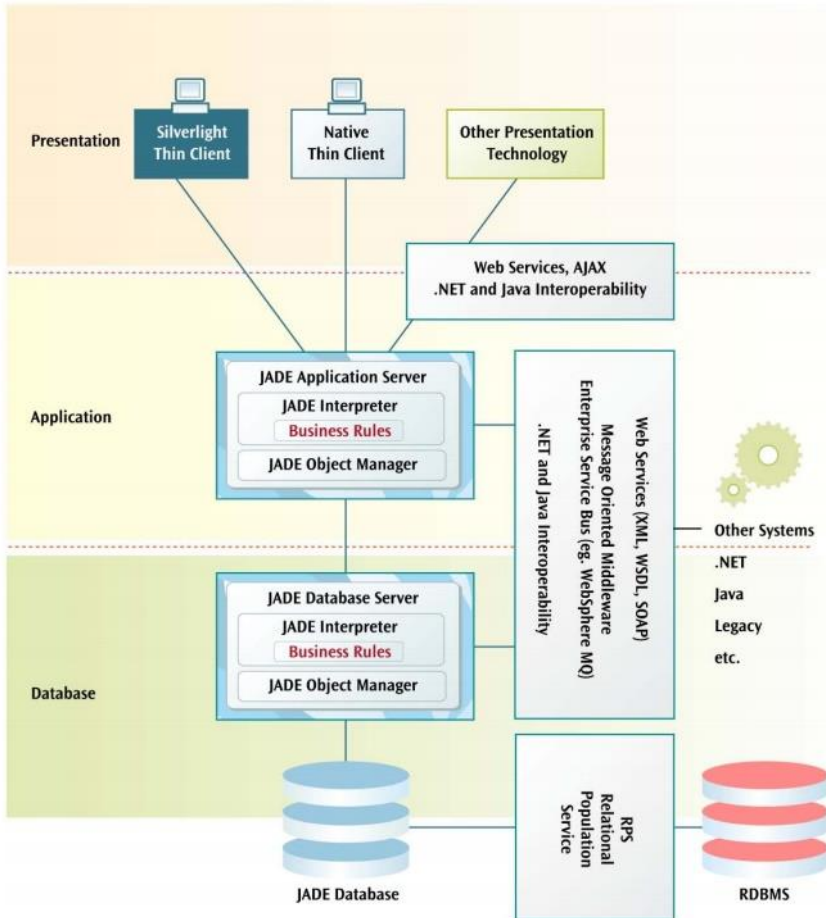
# Deployment Options



The system is deployed as a client server application. Clients can be connected to the server via the local area network at head office or through thin client over the internet. There are two other connectivity options:

- GWTS can be deployed as a stand-alone PC application that mainly operates off-line and periodically replicates when on line.
- Field data can be captured using mobile applications that mainly operate off-line and periodically replicates when on line.

# Single Interoperable Technology Platform



JADE provides several facilities to interoperate and co-exist with other technologies, the most important of which today is Web Services (XML, WSDL, SOAP).

Web Services are a set of technology standards that have become the leading model for encapsulating business processes and sharing them with other systems. JADE's Web Services support provides a seamless interface for JADE developers to build distributed JADE applications that interoperate with other platforms (for example, .NET, Java and WebSphere).

In addition to Web Services, JADE provides language-level interoperability via its .NET and Java Class Libraries, Object Manager APIs, External Functions and .NET Assembly Integration.



# Thank you!

For more information: [www.ata-marie.com](http://www.ata-marie.com)

Contact: [George.Kuru@ata-marie.co.id](mailto:George.Kuru@ata-marie.co.id)